



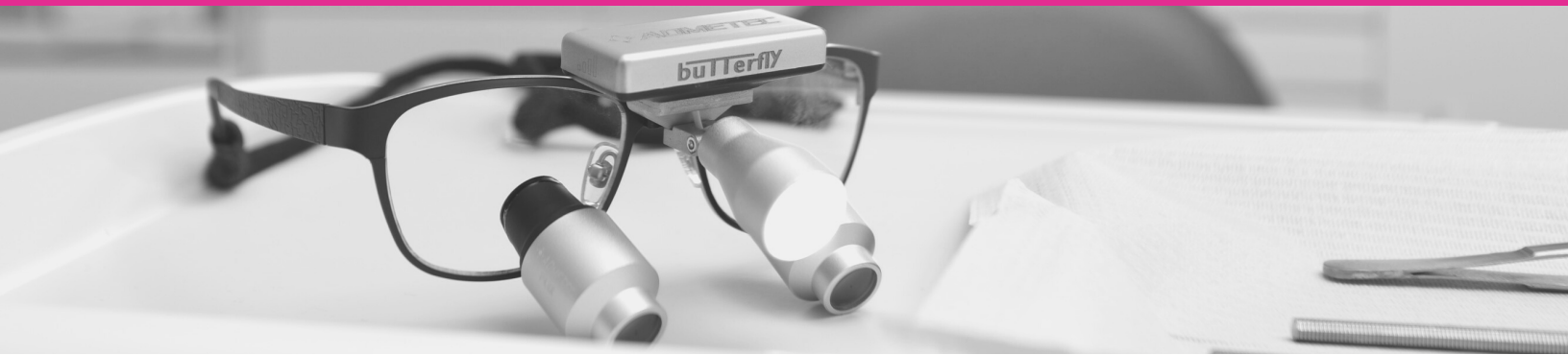
ANDAU MEDICAL

# Lights + Loupes

by  admetec



ANDAU MEDICAL



## About Us

Andau is a Medical and Dental device company focused on providing the market with quality technologies that improve patient outcomes and enhance clinical experience in delivering exceptional patient care.

We've partnered with Admetec to bring a game-changing line of ergonomic loupes + lights to Dentists, Hygienists and Surgeons.

The Ergo loupes enable you to be in a neutral position while you work, alleviating strain on the eyes, neck, back and shoulders. Wearing the Ergo loupes can reduce issues caused by poor ergonomics including rotator cuff, back injuries, elbow pain, carpal tunnel syndrome, finger stiffness and even eye sight deterioration.

We believe this is an important investment you can make in maintaining optimal health over the course of your career.

**Bridging the gap between  
innovation and your clinical needs**

## Why Us

Our high-quality Admetec Loupes + Lights are a market leader in many countries around the globe and offer advantages including the best ergonomics available, at the lightest weight. **We are bringing quality products with the best warranty, service and support in the industry!**

At Andau Medical we pride ourselves on providing the market with exceptional customer service. We want to be your go-to loupe + light provider for life, not just for the lifespan of your current loupes + lights. With this in mind, if you are not completely satisfied with our loupes give us a chance to make it right. If you are still not 100% satisfied we will gladly accept returns up to 90 days from your original purchase. We will provide a full refund minus shipping and handling charges.

We are also pleased to offer an extensive 2-year warranty on our loupes and lights\*. Our service program for repairs is the fastest in the industry with a 2-3 week turnaround on most repairs.

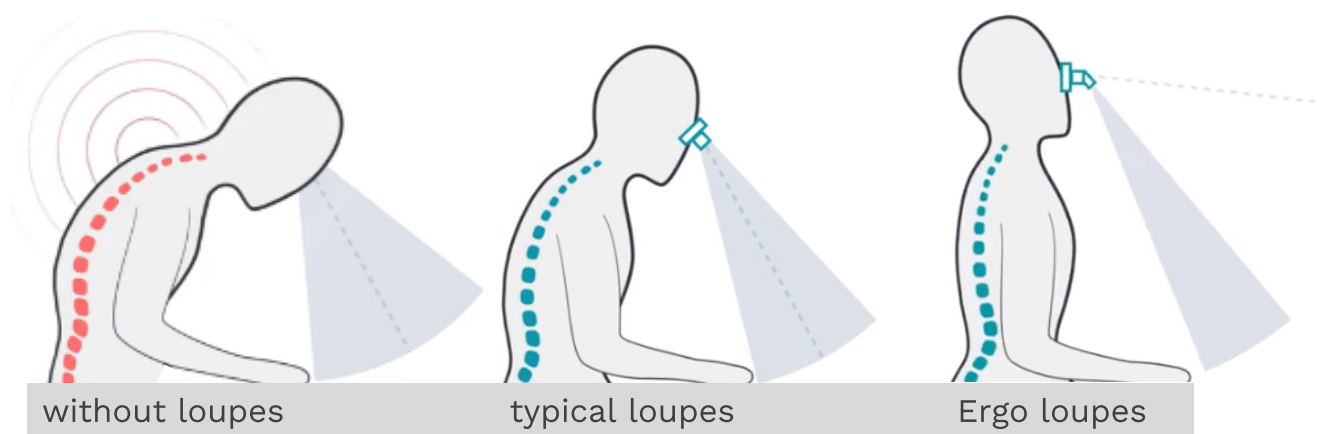
A few more of our advantages:

- Most innovative and ergonomic loupes + lights
- Lightest weight lights + loupes combination on the market
- Broadest range of magnification ranging from 2.5x to 7.5x
- Brightest wireless light on the market
- Provide local service and support

# Ergoloupes

Andau Medical has partnered with Admetec to bring a **game-changing** line of **ergonomic** loupes + lights to Dentists, Hygienists and Surgeons.

Our Ergo loupes enable you to be in a **neutral position** while you work, **alleviating strain** on the eyes, neck, back + shoulders.



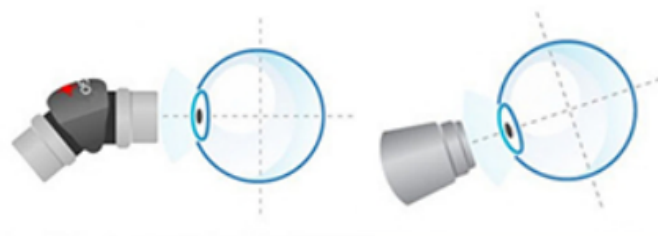
**Contact us to take **THE ERGO CHALLENGE** today!**

We will show you side by side photos of your improved ergonomic working position



Dr. M. Given | Airdrie, AB





## The New Perspective.



3.0x



4.0x



5.0x



6.0x



7.5x



5.0x | Morriz of Sweden (Wide)

magnification	field of view	depth of field
3.0x	6"	4.5"
4.0x	4"	4"
5.0x	3.4"	3.5"
6.0x	2.5"	3"
7.5x	2"	2.4"

# Galileanloupes

High quality Galilean binoculars installed into the loupes are extremely close to the eyes and therefore provide a wide field of vision.

## 2.5x magnification

The best choice for general dental treatment - affords sufficient magnification, without decreasing the focal depth, while allowing a comparatively wide field of vision.

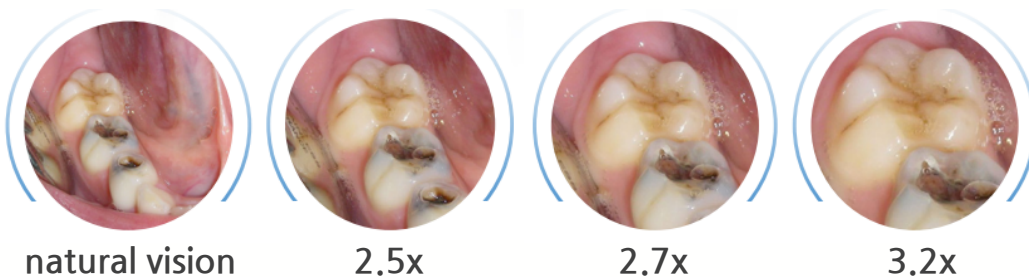
## 2.7x magnification

Offers a generous field of view and increased magnification, providing greater clinical detail.

## 3.2x magnification

This degree of magnification provides the most detailed, high-resolution view of the microscopic area.

magnification	field of view	depth of field
2.5x	5"	6"
2.7x	4"	5"
3.2x	4"	3"



\*\*photos represent magnification of the object, not the field of view



2.5x | Jazz



2.7 | Morriz of Sweden



3.2x | Bolle



3.2x | Progear

# Prismaticloupes

Admetec Prismatic loupes are ideal for surgeons who require higher magnifications for critical surgical procedures.

The prismatic optical system produces a highly detailed image with crisp edge-to-edge clarity and precise colour rendition, which is ideal for intricate surgeries.

Admetec Prismatic system's lenses are treated with an anti-reflective coating to aid in producing this superior image.



Aesthetic beauty, perfection of design and acute visual performance, are the unique trademarks of Admetec products. Defined by those very same standards, our prismatic loupes are an exceptional product that combines materials that are strong and lightweight, so you can exercise your skills under optimal conditions and focus solely on the task at hand.

magnification	field of view	depth of field
4.0x	4"	3.5"
4.8x	3"	3"
5.5x	2.5"	3"



4.0x | Jazz



4.8x | Morriz of Sweden



5.5x | Morriz of (wide)



4.0x | Jazz

# Experience extraordinary illumination.

**butterfly**  
by ADMETEC



Having proper illumination during procedures and examinations is crucial to ensuring that critical details are not overlooked by the naked eye. While magnification may enhance your viewing field; proper lighting will work to eliminate shadows that may impede your field of view.

The Butterfly is the best wireless light available on the market, offering the brightest light with the lightest weight.

Advanced technologies and control measures ensure that the intensity of the light remains uniform even as the battery is being depleted. This easy-to-use system enables quick swapping of the battery during procedures via magnetic attachment.

The Butterfly comes with a light source, 3 batteries, a convenient magnetic clip charger and yellow flip-up anti-curing filter.



	<b>Butterfly</b>	<b>Butterfly-S</b>
brightness	35,000 lux	55,000 lux
weight	23 grams	28 grams
total run time	6 hrs	6 hrs
charge time	1.5 hr	1.5 hr

\*The Butterfly has a 1-year warranty on parts other than the headlight, which is 2-years



# Experience extraordinary illumination.

## ORCHID

by ADMETEC

The ORCHID light is the first of its kind in the global market and is remarkable for being light weight while still providing a well-focused and shadow-free light.



Orchid / Orchid-F



Orchid-S / Orchid Ergo

The ORCHID-F and Orchid Ergo models are uniquely designed with an integrated yellow anti-curing filter, which can be turned on or off with the press of a button.

The ORCHID-S and ORCHID Ergo models are our most powerful headlights yet! They have been created to provide a clear, shadow-free area of high visual acuity and designed for microsurgical procedures. This is a perfect light for higher magnification loupes, such as our 5.0x to 7.5x Ergo.

All models come with a light source and 2 battery packs equipped with a digital dimmer, battery charge indicator, yellow anti-curing filter\*, and a Lithium-Ion battery to enable many hours of uninterrupted work.

	ORCHID	ORCHID-F	ORCHID Ergo	ORCHID-S
brightness	60,000 lux	60,000 lux	150,000 lux	220,000 lux
weight	9 grams	9 grams	11.5 grams	11.5 grams
total run time	6 hrs	6 hrs	6 hrs	4 hrs
charge time	2.5 hrs	2.5 hrs	2.5 hrs	2.5 hrs

\*filter not included with Orchid-S

# Frames

## Blues

material  
colours

titanium  
black, bronze,  
blue, pink



## Soul

material  
colours

titanium  
red, black,  
brown, pink



## Morriz of Sweden (wide)

material  
colours

titanium  
black, grey/aubergine  
navy/gold, white/gold



## Morriz of Sweden

material  
colours

titanium  
black, blue  
green, red



# Frames

## Jazz

material titanium  
colours red, orange, blue



## Progear

material plastic  
colours black, grey/red  
white/blue

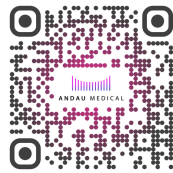


## Bolle

material plastic  
colours gunmetal



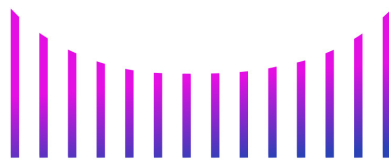
Contact us to take **THE ERGO CHALLENGE**  
or to be connected with a local sales  
representative for a custom fitting



[www.andaumedical.com](http://www.andaumedical.com)

1-844-ANDAU88

[CustomerService@andaumedical.com](mailto:CustomerService@andaumedical.com)



**ANDAU MEDICAL**